

2022 Construction Outlook Hawaii Survey Results

Total Responses: 24. Responses varied for some questions. Percentages are based on responses to each question and may not sum to 100 due to rounding.

1. Compared to 2021, do you expect the available dollar value of projects you compete for in 2022 to be higher/lower/about the same (answer for all market areas in which your business operates):

Responses: 24

Market	Higher	Lower	Same	Net*	US Net
Federal (e.g., VA, GSA, USACE, NAVFAC)	77%	9%	14%	68%	37%
Bridge/Highway	65%	18%	18%	47%	57%
Transportation	63%	0%	37%	63%	51%
Multifamily Residential	53%	5%	42%	47%	32%
K-12 School	48%				
Hospital					
Manufacturing					
Warehouse					

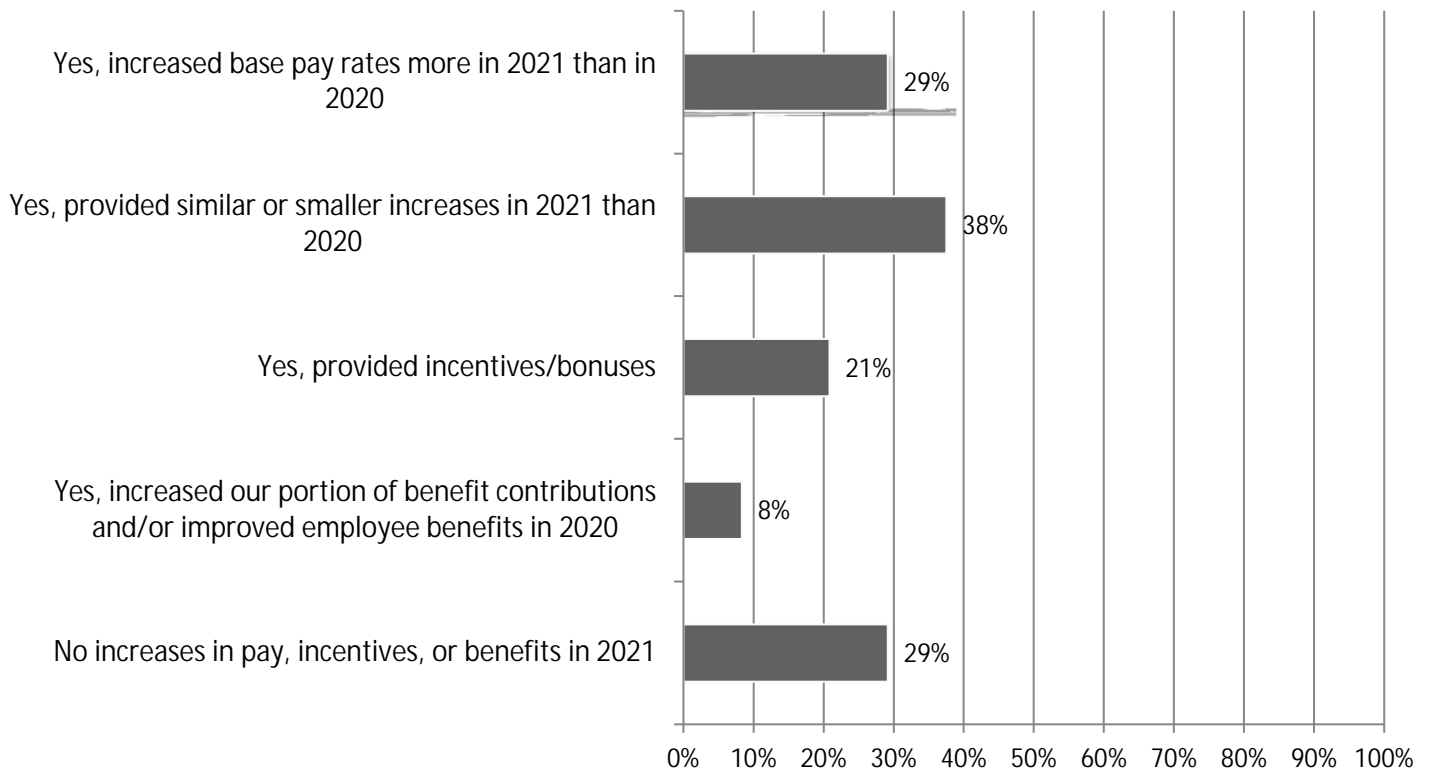
Lo-(2)0ec.902 -0 Td(3)0.5 (8)0.5 (8)7o (%)T99i2

2. What percent change do you expect in your headcount in 2022? Responses: 24

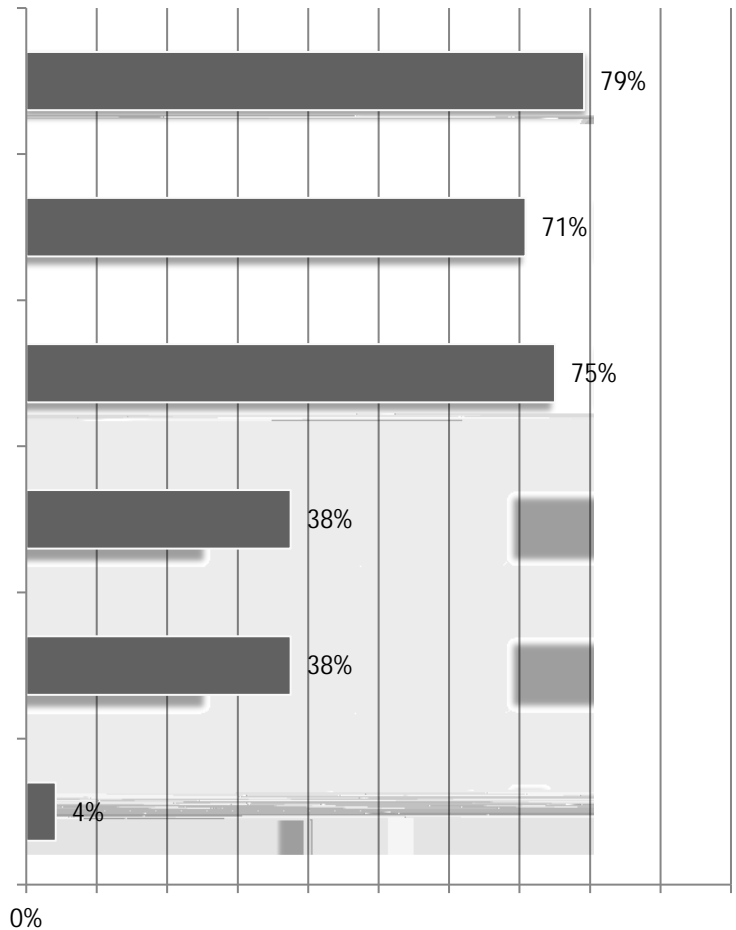
3. How would you describe your current situation in filling salaried and hourly craft positions?
Responses: 24

4. Do you expect any changes in the availability of hourly craft or salaried personnel over the coming 12 months? Responses: 24

5. Did your firm increase or decrease pay or benefits in 2021? (mark all that apply) Responses: 24



6. What impact, if any, has the pandemic had on your projects this year? (mark all that apply) Responses: 24



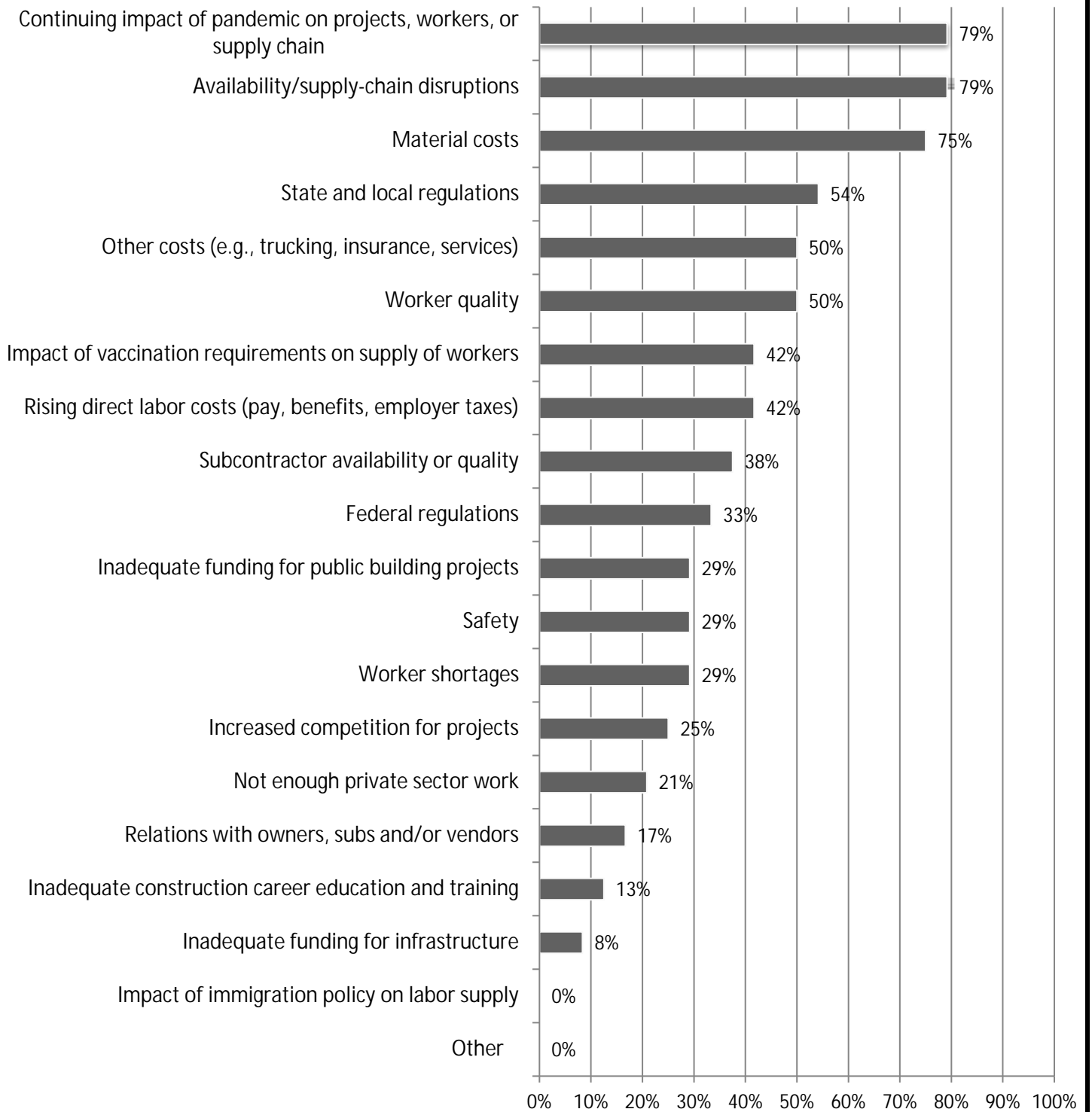
7.

9. If projects were postponed or canceled, what was the main reason? Responses: 16

--	--	--	--	--	--	--	--	--	--	--	--

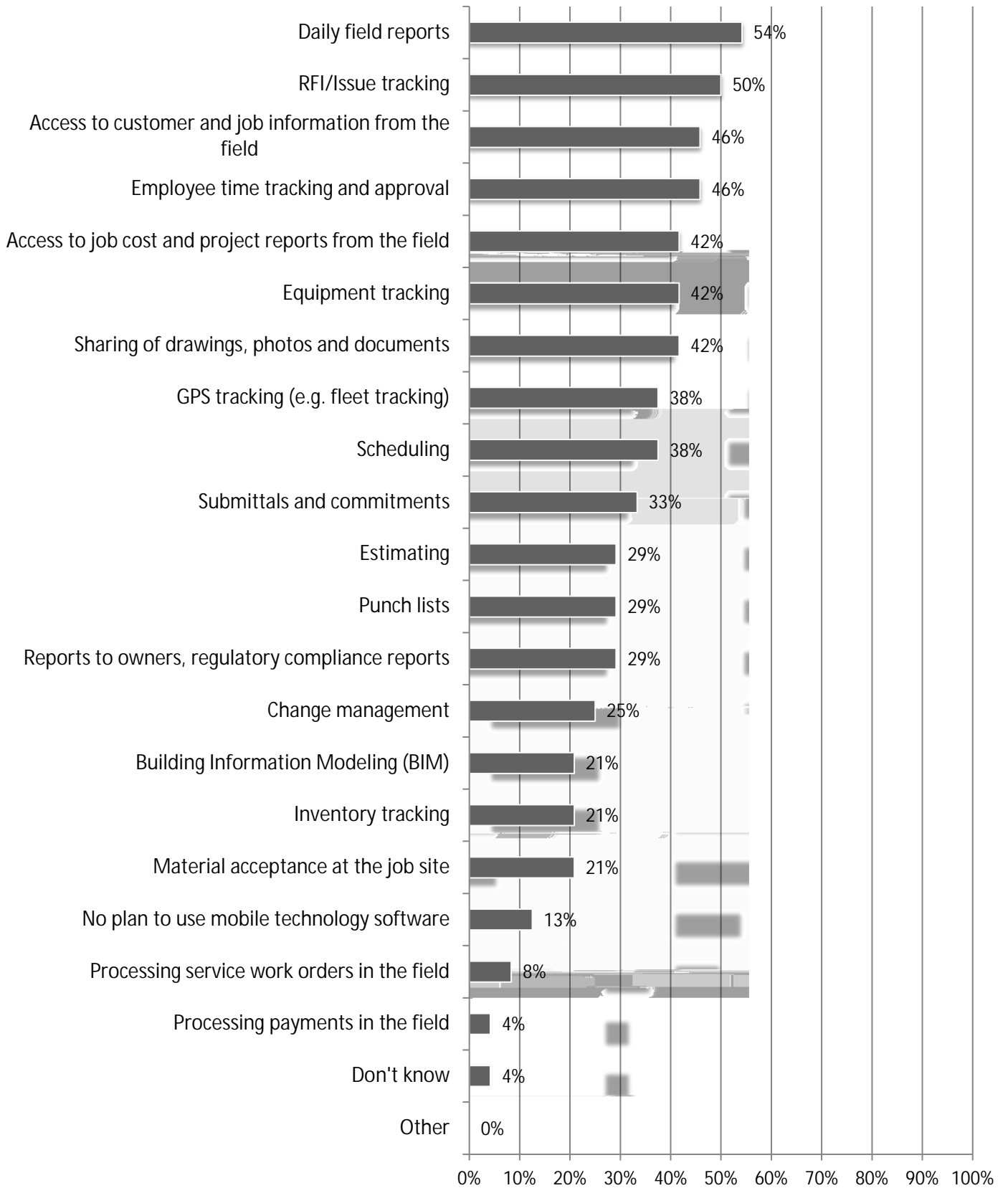
10. When do you expect your firm's volume of business will return to its normal level relative to one year earlier?
Responses: 24

11. What are your biggest concerns for 2022? (mark all that apply) Responses: 24



12. What challenges, if any, do you see regarding the safety and health of your firm's workers (mark all that apply)? Responses: 21

14. How does your company plan to use mobile software technology? (Mark all that apply) Responses: 24

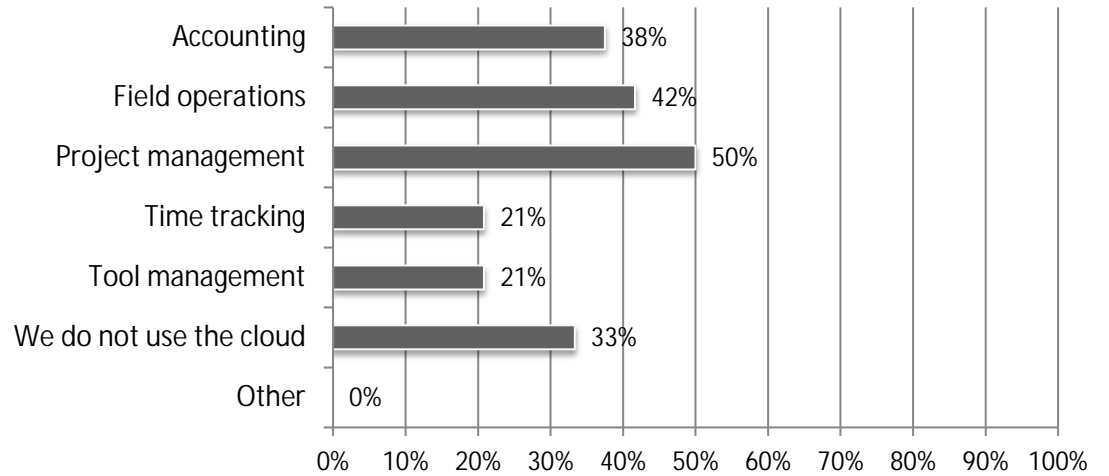


15. Does your firm currently have a formal IT plan to support your business objectives? Responses: 24

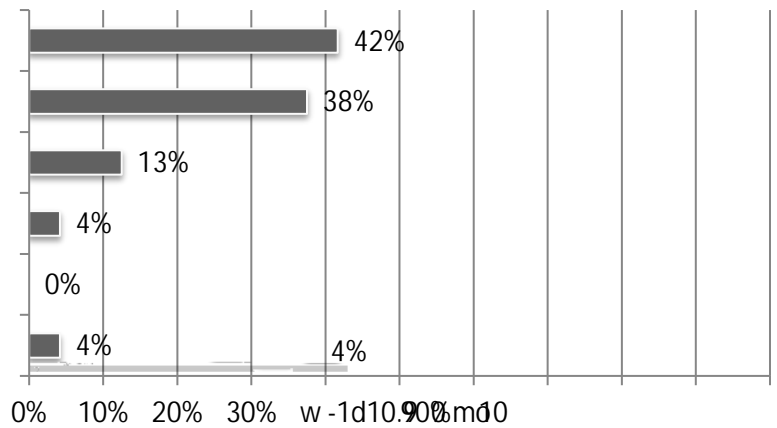
16. What are your biggest IT challenges (mark all that apply)? Responses: 24

17. Does your firm use cloud-hosted technology in any of the following ways (mark all that apply)?

Responses: 24



18. What best describes your firm? Responses: 24



19. When you self-perform construction work, do you operate as a union contractor or an open-shop contractor?

Responses: 24

