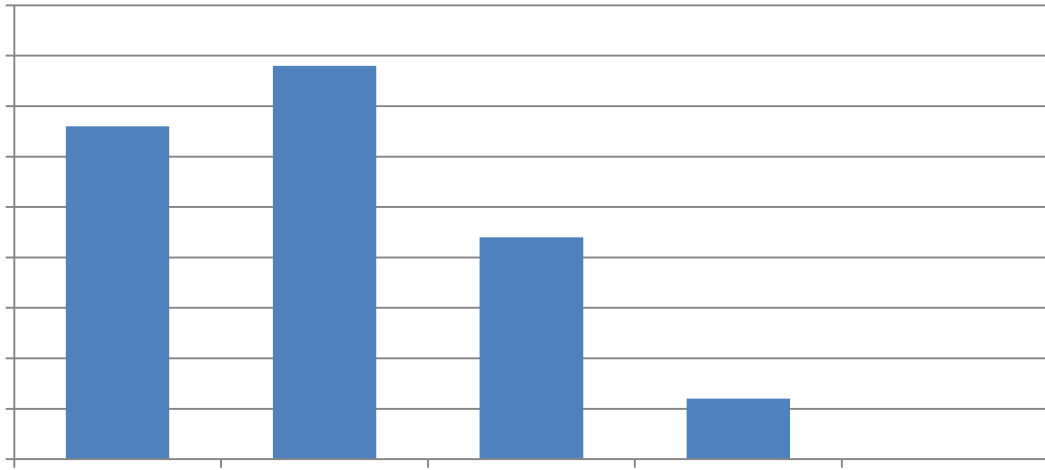


7. What changes, if any, in the availability of skilled craft workers do you expect over the coming 12 months?

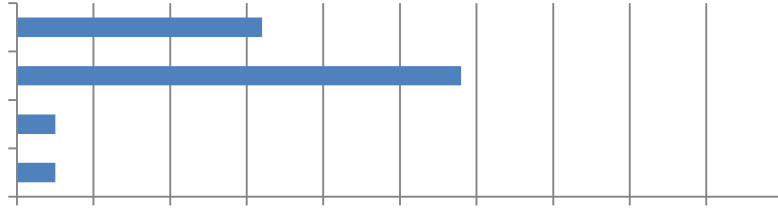
8. How would you rate the following:



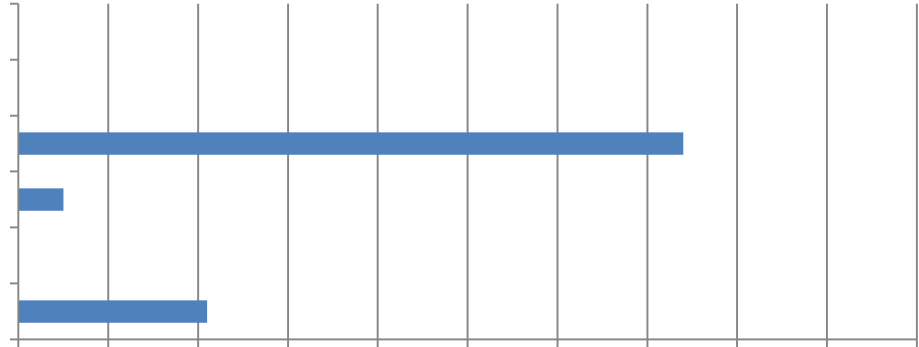
9. Do you believe the pool of available qualified construction professionals in your local area is sufficient to meet significant increases in construction demand in the next 12 months?

10. Do you believe the pool of available skilled construction craft workers in your local area is sufficient to meet
significa5(r)7(s3(ti(g)-3(n)19(c)-5(r)-3(e)5(a5[s]-3(e)17(s)-2(i)-5(n)4()9(c)-4(o)5(1a5[s]-8(tw)-u(n)19(c)-5(ti)-4(o)5(n)4d(l

16. Is your firm having to increase wages and/or benefits to retain construction craft workers?



17. My firm is best described as a:



18. My firm operates primarily in the following sector(s) of the construction industry:

19. How many total employees does your organization employ at all of its locations?