

## 2013 Worker Shortage Survey Results

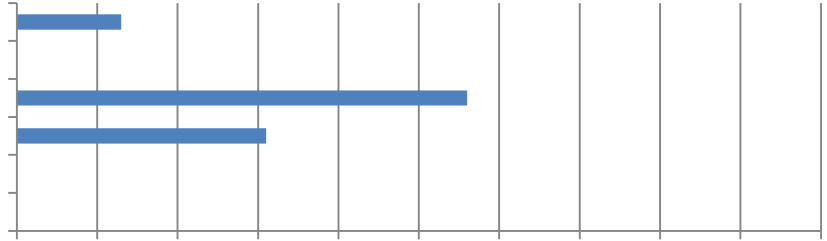
1. What changes have you made to the size of your professional staff during the past 12 months? Note: In this survey, we will use the term "professional staff" to refer to all types of employees other than craft workers. This includes executives, managers, office professionals and field supervisors (e.g., CEO, safety manager, HR manager, project manager, engineer).

2. What changes have you made to the size of your craft workers during the past 12 months?

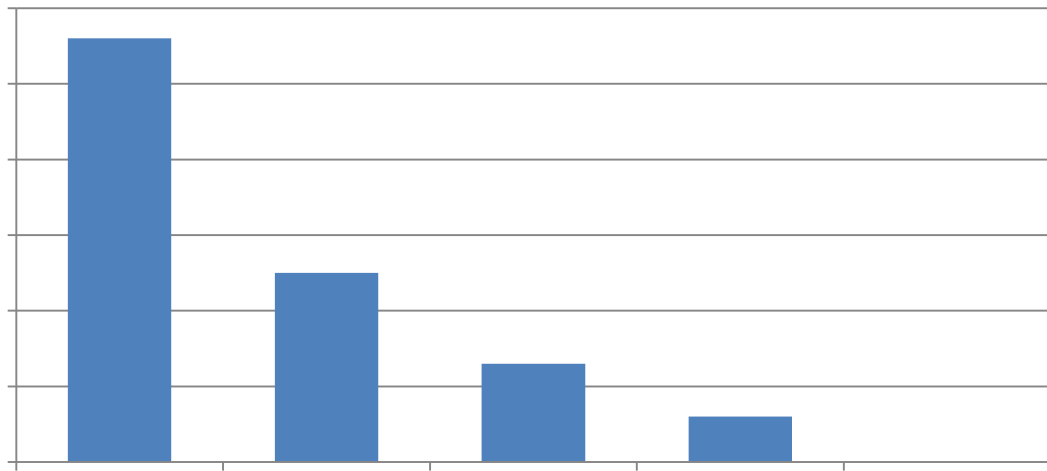
3. How would you describe your current workforce challenges?

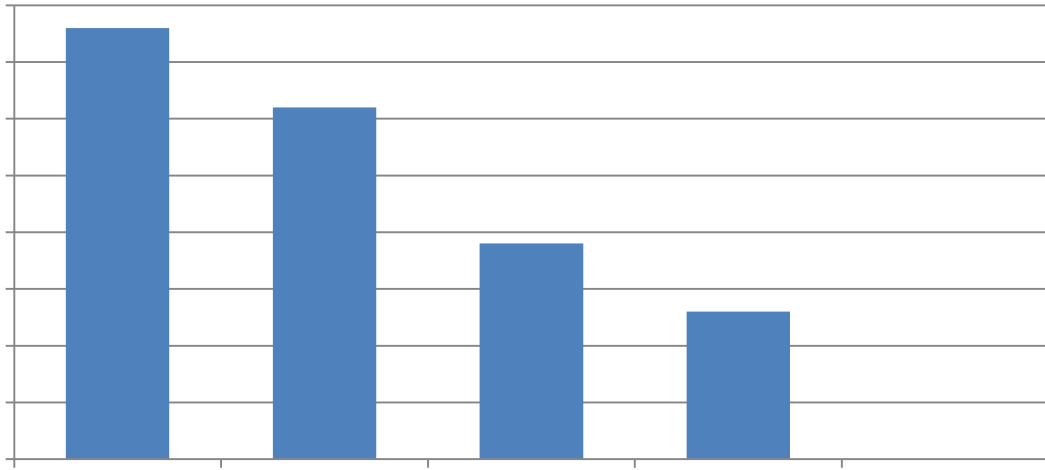


7. What changes, if any, in the availability of skilled craft workers do you expect over the coming 12 months?



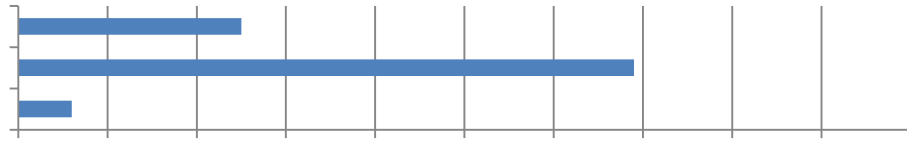
8. How would you rate the following:





9. Do you believe the pool of available qualified construction professionals in your local area is sufficient to meet significant increases in construction demand in the next 12 months?

10. Do you believe the pool of available skilled construction craft workers in your local area is sufficient to meet significant increases in construction demand in the next 12 months?



11. What steps, if any, is your firm taking to encourage or prepare future craft workers for careers in construction?

--	--	--	--	--	--	--	--	--	--	--

12. What steps, if any, is your firm taking to encourage or prepare future construction professionals?



16. Is your firm having